



Fletcher Road, London, W4 5AS

£550,000

WHITMAN & CO.

SALES · LETTINGS · COMMERCIAL

- Two/three bedrooms
- 788 sq ft of accommodation
- Private front door
- Bright and spacious maisonette
- Sought after residential road
- Freehold

Tenure - Flying freehold
Local Authority - Ealing Council
Council Tax - Band D

THE PROPERTY

This unique two/three-bedroom maisonette offers versatile living space within a rare stand-alone property.

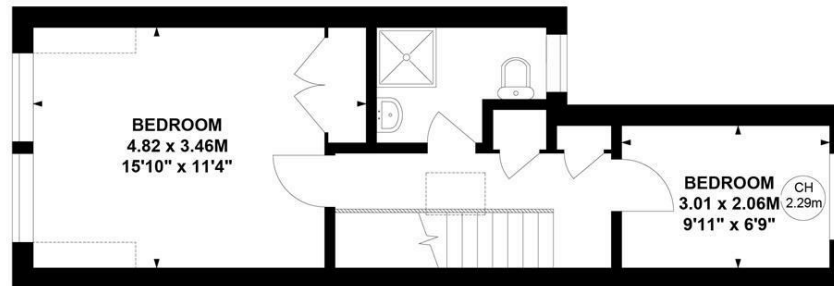
Accessed via a private front door, the home features a bright 13'10" reception room, a well-appointed fitted kitchen, a shower room, and two/three bedrooms. Spanning 778 sq ft, the property enjoys excellent natural light throughout and offers adaptable accommodation suited to a variety of lifestyles.

With the benefit of the flying freehold, this maisonette is ideally positioned on a sought-after residential street, within close reach of excellent transport links and a wide array of local amenities.

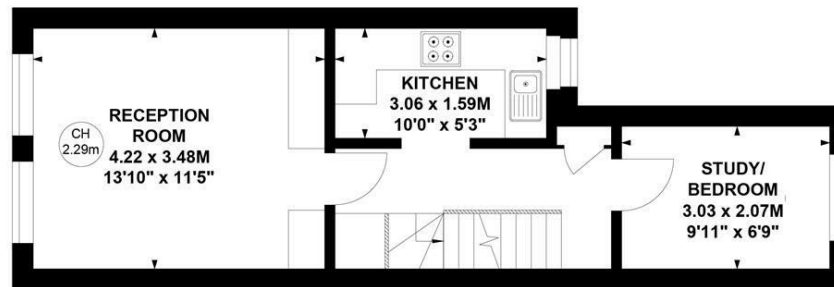
Fletcher Road, W4

Approximate Gross Internal Area
72.24 sq m / 778 sq ft

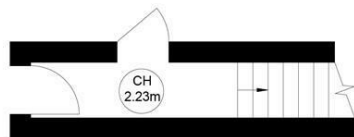
Key :
CH - Ceiling Height



Second Floor



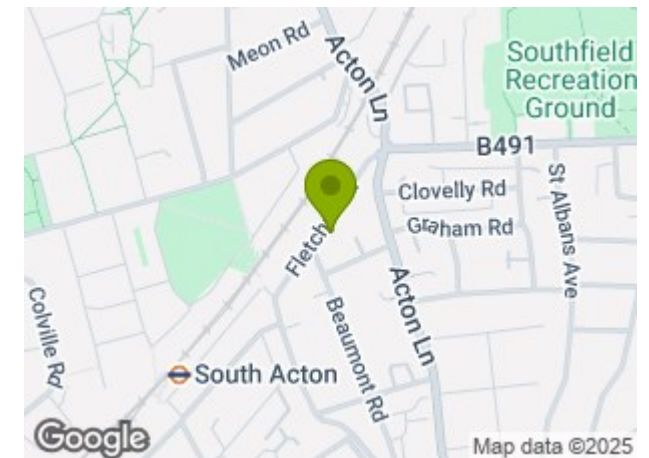
First Floor



Ground Floor

Not to scale, for guidance only and must not be relied upon as a statement of fact.
All measurements and areas are approximate only

SITUATION



5-7 Turnham Green Terrace, Chiswick, London, W4 1RG

Tel 020 8747 8800

E-mail sales@whitmanandco.com

Website www.whitmanandco.com